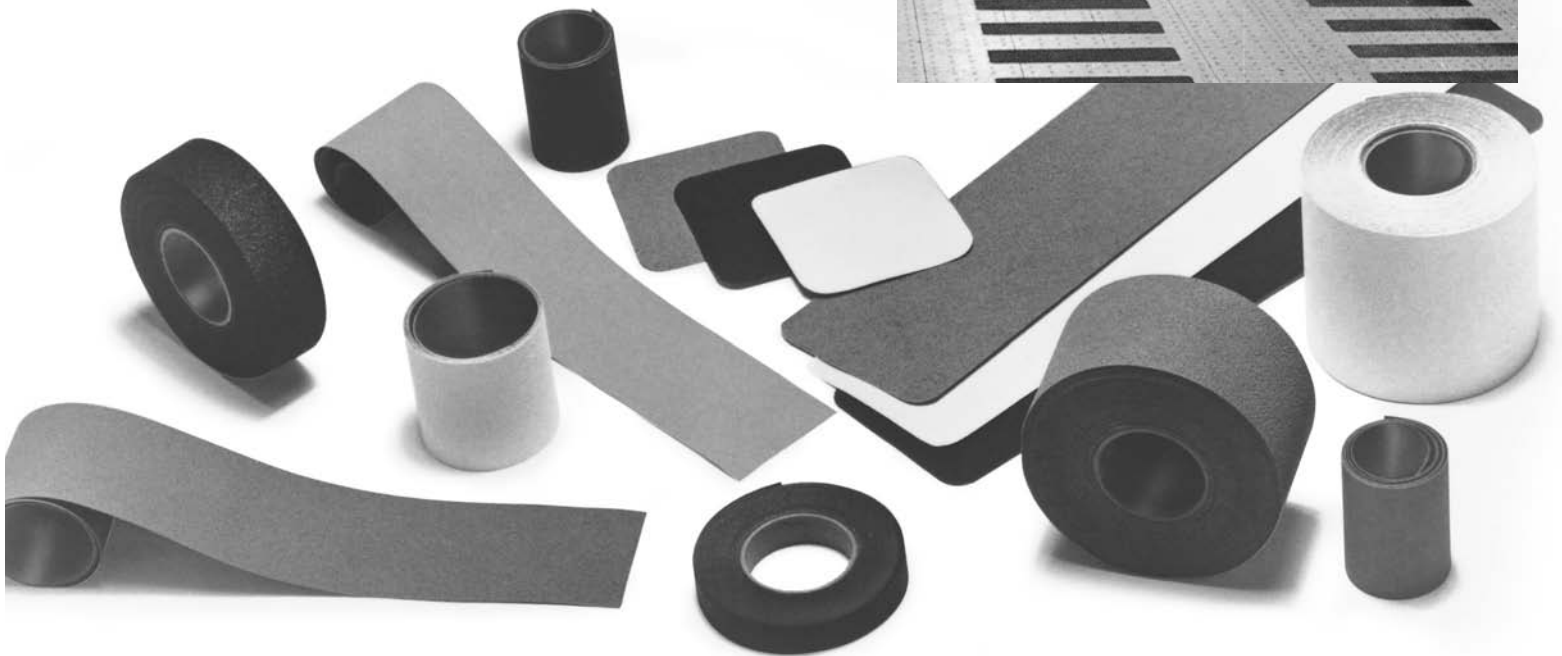
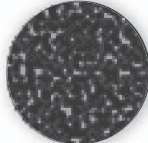

3M™ Safety-Walk™ Peel-and-Stick Slip-Resistant Tapes and Treads



3M™ Safety-Walk™ Coarse Tapes and Treads—700 Series

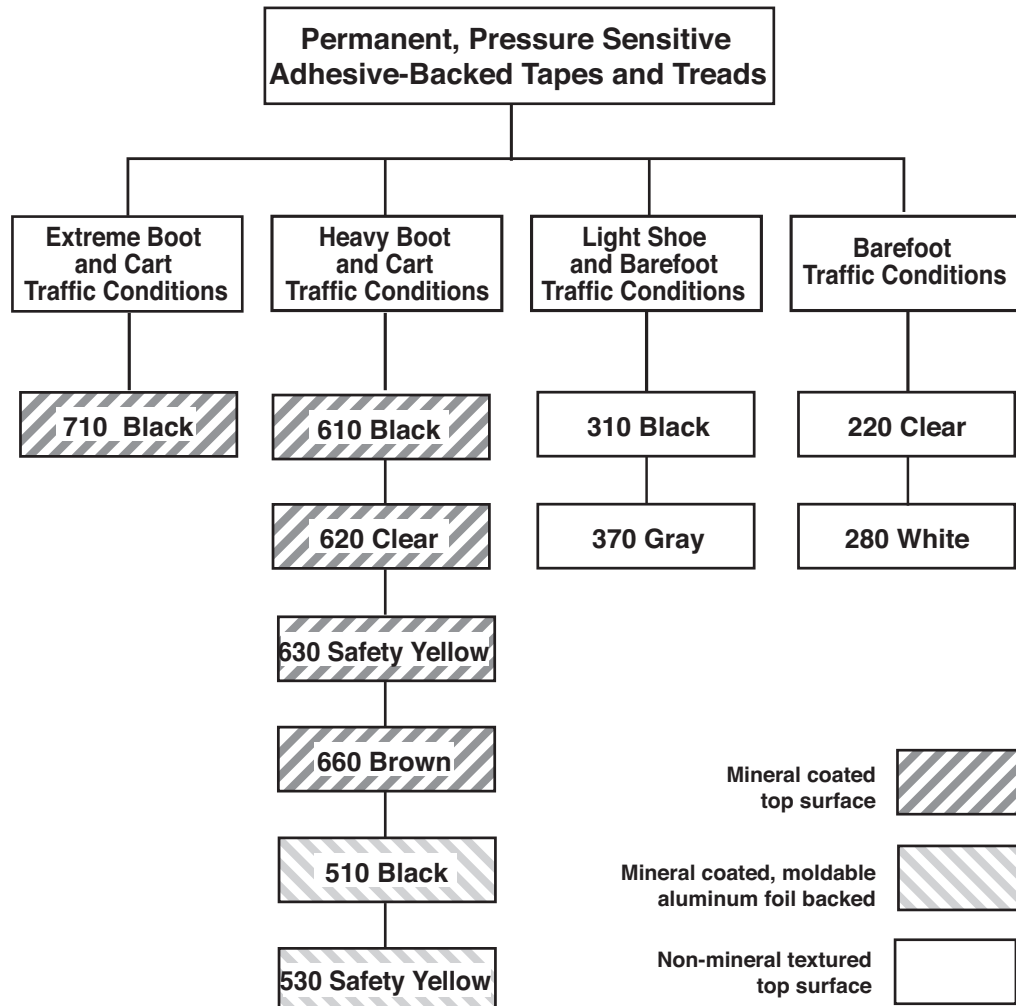
- For extreme, heavy traffic areas
- Mineral-coated, slip-resistant surface
- Extra-large abrasive particles help provide a stable surface even in the presence of water or oil
- High performance adhesive creates excellent bond to most surfaces
- Applications: Construction vehicles, ship and plane deck, trains, semi trailers, oily wet area, platforms and ramps, machine shops, agriculture and forestry equipment, recreational vehicles



Black #710



Slip-Resistant Matting, Tapes and Treads



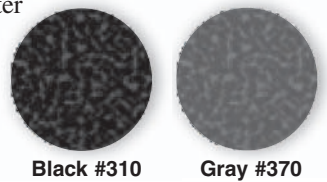
3M™ Safety-Walk™ Fine Resilient Tapes and Treads—200 Series

- For wet, barefoot-traffic areas
- Non-mineral, fine-textured, slip-resistant vinyl surface
- Water-resistant, acrylate adhesive is ideal for wet conditions
- Applications: showers, tubs, surfboards, around hot tubs and pools



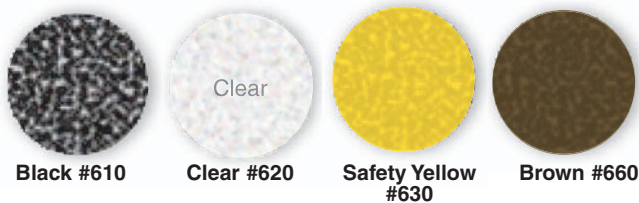
3M™ Safety-Walk™ Medium Resilient Tapes and Treads—300 Series

- For barefoot- or shoe-traffic areas
- Non-mineral, medium-textured, slip-resistant vinyl surface
- Resilient surface and durable adhesive provide long-lasting performance
- Applications: locker rooms, around hot tubs and pools, boats, personal watercraft, water skis, exercise equipment, conveyers



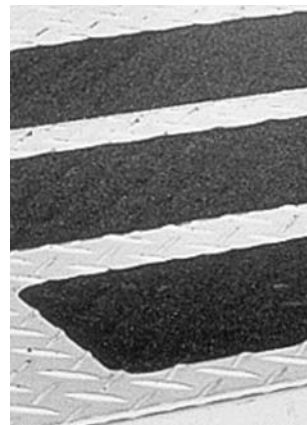
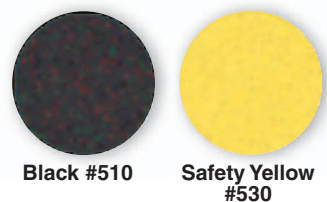
3M™ Safety-Walk™ General Purpose Tapes and Treads—600 Series

- For light to heavy shoe-traffic areas
- Mineral-coated, slip-resistant surface
- Pressure-sensitive adhesive, covered by removable protective liner, is easy to apply
- Applications: stairs, ramps, entrances, lawn equipment, ladders, snowmobiles, scooters, construction machinery and vehicles



3M™ Safety-Walk™ Conformable Tapes and Treads—500 Series

- For irregular surfaces in light to heavy shoe-traffic areas
- Mineral-coated, slip-resistant surface
- Foil backing conforms to corners and irregular surfaces
- Aggressive adhesive holds securely
- Applications: stairs, ladders, loading ramps, platforms, irregular surfaces like diamond plate



Product Specifications

3M™ Safety-Walk™ Fine Resilient Tapes and Treads—200 Series

Applications: Light barefoot-traffic and wet areas, showers, tubs, around hot tubs and pools, personal watercraft

Material: Non-mineral, fine-textured vinyl surface backed by a pressure-sensitive adhesive

Colors: Clear #220, White #280

Sizes:
Treads: 6 inches x 24 inches (152mm x 609mm)
Tapes: A variety of widths from 1 inch to 12 inches wide x 60 feet long (25mm to 304mm wide x 18.2m long)
 Custom shapes and sizes also available.

Typical Properties:	Average Measured Values:
Applied Thickness	.023 in. (.60mm)
Applied Weight	2.1 oz./ft ² (640 g/m ²)
Minimum Application Temperature	50°F (10°C)
Maximum Service Temperature	150°F (66°C)
Fire Retardancy:	
NFPA 101	Type I
GSA classification	Class A
FAA 25.855-F-1	Passes
Coefficient of Friction:	
Mil-D-17951 E	Meets or exceeds
Chemical Resistance	Resists most chemicals

3M™ Safety-Walk™ Medium Resilient Tapes and Treads—300 Series

Applications: Light to medium barefoot- or shoe-traffic areas, locker rooms, around hot tubs and pools, boats, personal watercraft, water skis, exercise equipment, conveyers

Material: Non-mineral, medium-textured vinyl surface backed by a pressure-sensitive adhesive

Colors: Black #310, Gray #370

Sizes:
Treads: 6 inches x 24 inches (152mm x 609mm)
Tapes: A variety of widths from 1 inch to 48 inches wide x 60 feet long (25mm to 121cm wide x 18.2m long)
 Custom colors, shapes and sizes available. Special adhesives are also available for powder-coated surfaces.

Typical Properties:	Average Measured Values:
Applied Thickness	.045 in. (1.17mm)
Applied Weight	2.7 oz./ft ² (827 g/m ²)
Minimum Application Temperature	40°F (4°C)
Maximum Service Temperature	175°F (79°C)
Fire Retardancy:	
NFPA 101	Type II
GSA classification	Class B
FAA 25.855-F-1	Passes
Coefficient of Friction:	
Mil-D-17951 E	Meets or exceeds
Chemical Resistance	Resists most chemicals

3M™ Safety-Walk™ General Purpose Tapes and Treads—600 Series

Applications: Heavy-traffic work areas, stairs, ramps, entrances, running boards, ladders, heavy equipment, construction machinery and vehicles

Material: Mineral-coated polyester surface backed by a pressure-sensitive adhesive

Colors: Black #610, Clear #620, Safety Yellow #630, Brown #660

Sizes:
Treads: 3/4 inch x 24 inches (19mm x 609mm)
 5-1/2 inches x 5-1/2 inches (139mm x 139mm)
 6 inches x 24 inches (152mm x 609mm)
Tapes: A variety of widths from 3/4 inch to 48 inches wide x 60 feet long (19mm to 121cm wide x 18.2m long)
 Custom shapes and sizes available.
 Special adhesives are also available for powder-coated surfaces.

Typical Properties:	Average Measured Values:
Applied Thickness	.028 in. (.711mm) Black .036 in. (.914mm) Clear, Colored
Applied Weight	2.4 oz./ft ² (732 g/m ²) Black 2.4 oz./ft ² (732 g/m ²) Clear, Colored
Minimum Application Temperature	40°F (4°C)
Maximum Service Temperature	175°F (79°C) Black 150°F (66°C) Clear, Colored
Fire Retardancy:	
NFPA 101	Type I
GSA classification	Class A
FAA 25.855-F-1	Passes
Coefficient of Friction:	
Mil-D-17951 E	Meets or exceeds
Chemical Resistance	Resists most chemicals

3M™ Safety-Walk™ Conformable Tapes and Treads—500 Series

Applications: For irregular or contoured surfaces, diamond tread metal, screw heads, stairs, ladders, lawn mowers, riveted equipment, machinery and vehicles

Material: Mineral-coated moldable aluminum foil surface backed by a pressure-sensitive adhesive

Colors: Black #510, Safety Yellow #530

Sizes:
Treads: 5-1/2 inches x 5-1/2 inches (139mm x 139mm)
 6 inches x 24 inches (152mm x 609mm)
Tapes: A variety of widths from 2 inches to 24 inches wide x 60 feet long (50mm to 609mm wide x 18.2m long)
 Custom shapes and sizes available.
 Special adhesives are also available for powder-coated surfaces.

Typical Properties:	Average Measured Values:
Applied Thickness	.036 in. (.914mm)
Applied Weight	2.8 oz./ft ² (854 g/m ²)
Minimum Application Temperature	40°F (4°C)
Maximum Service Temperature	175°F (79°C)
Fire Retardancy:	
NFPA 101	Type I
GSA classification	Class A
FAA 25.855-F-1	Passes
Coefficient of Friction:	
Mil-D-17951 E	Meets or exceeds
Chemical Resistance	Resists most chemicals

3M™ Safety-Walk™ Coarse Tapes and Treads—700 Series

Applications: Construction vehicles, ship and plane decks, trains, semi trailers, oily wet areas, platforms and ramps, machine shops, agriculture and forestry equipment, recreational vehicles

Material: Coarse mineral-coated polymer surface backed by a high performance pressure-sensitive adhesive

Colors: Black #710

Sizes:

Treads: 6 inches x 24 inches (152mm x 609mm)

Tapes: A variety of widths from 4 inches to 24 inches wide x 30 feet long (100m to 609mm wide x 9.1m long)

Custom shapes and sizes also available.

Typical Properties:

Typical Properties:	Average Measured Values:
Applied Thickness	.048 in. (1.22mm)
Applied Weight	5.51 oz./ft ² (1,720 mg/cm ²)
Minimum Application Temperature	40°F (4°C)
Maximum Service Temperature	175°F (79°C)
Fire Retardancy, Smoke Density & Toxicity:	
IMO A653 (16) & MSC 61-(67)	Passes
NF F 16101 (trains)	M2 F1
DIN 5510 (trains)	SF3
Coefficient of Friction:	
Mil-D-17951 E	Exceeds specifications
DIN 51130 (ZH1/571)	R13
Chemical Resistance	Resists most chemicals

Traction Systems Accessories

3M™ Safety-Walk™ Primer #901

Prepares rough or porous surfaces before application of Safety-Walk slip-resistant tapes and treads.



3M™ Safety-Walk™ Edge Sealing Compound #902

Protects exposed edges of Safety-Walk slip-resistant tapes and treads from excessive moisture or liquids.



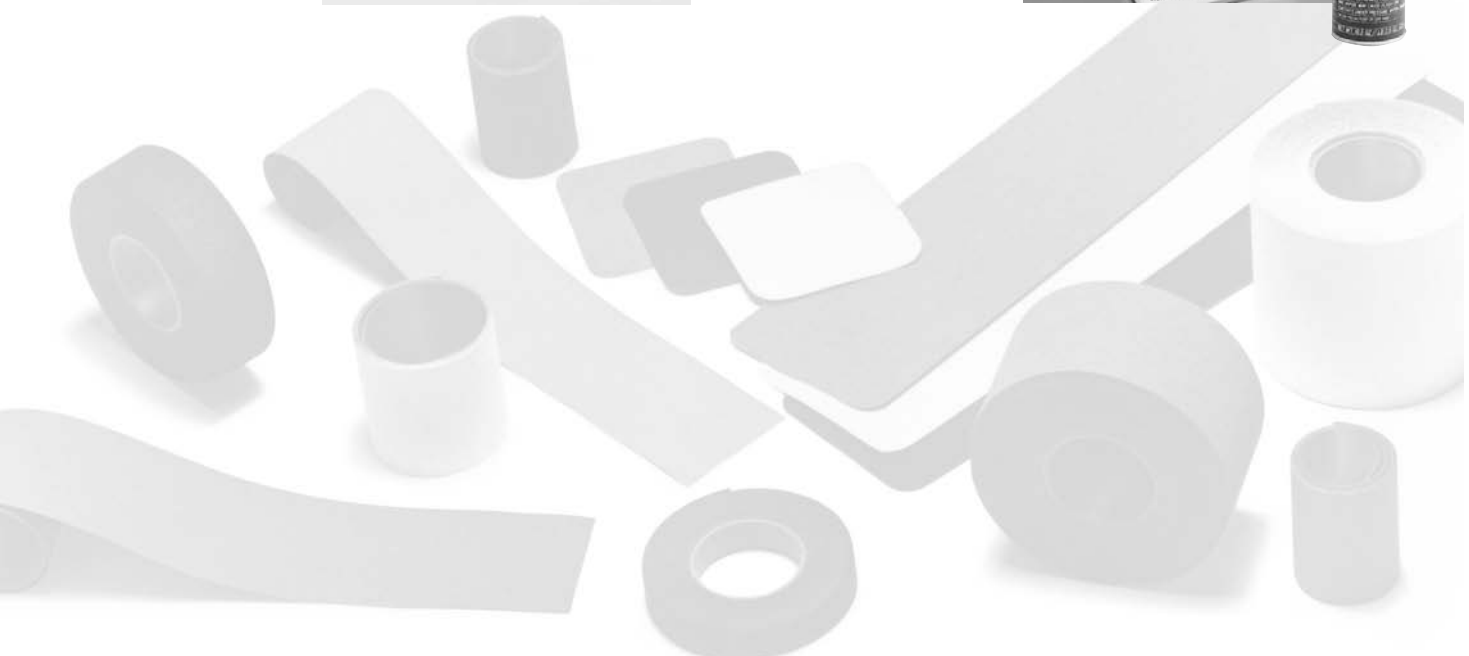
3M™ Safety-Walk™ Rubber Hand Roller #903

Helps provide a firm bond when applying Safety-Walk slip-resistant tapes and treads.



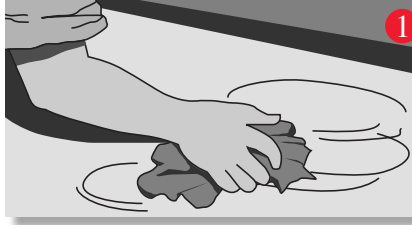
3M™ Citrus Base Industrial Cleaner

Liquid cleaner/degreaser used to help dissolve and remove dirt, grease, tar and many non-curing adhesives.



Easy to apply

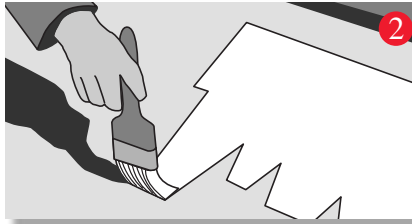
Make sure surface is clean, dry, smooth and above minimum application temperature.



1 Clean the area with soap and water to remove any grease or dirt. Rinse thoroughly and allow to dry.



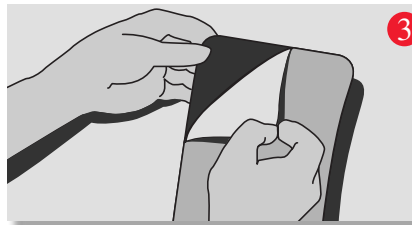
4 Apply the remaining Safety-Walk product by gradually pulling the liner and pressing in place. Use a small rubber roller to help provide a firm bond.



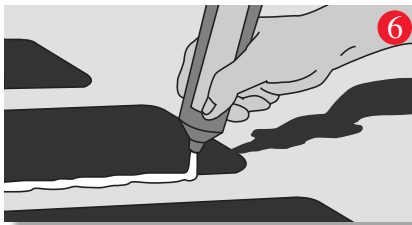
2 For porous surfaces (like unpainted concrete), apply 3M™ Safety-Walk™ Primer with a brush on the exact area where the 3M™ Safety-Walk™ Slip-Resistant Tape or Tread is to be placed. Allow primer to dry.



5 For 3M™ Safety-Walk™ Conformable Treads only, use a rubber mallet to conform the Safety-Walk slip-resistant product to the irregular diamond tread surface.



3 Peel one end of the Safety-Walk product backing and place it in the appropriate area. Try not to touch the adhesive.



6 For wet areas, apply 3M™ Safety-Walk™ Edge Sealing Compound on the edge of the Safety-Walk slip-resistant product, making sure that the sealer bead covers the edge of both the tread and floor. After the edge sealer dries (typically 30 minutes), the area is ready for use.

Easy to maintain

Inspect the application periodically to maintain product effectiveness and ensure serviceability.

Regularly scrub the treads with a stiff bristle brush to ensure they're kept free from dirt and other residue that might impair functionality.

Wash with soap and water to keep material and surrounding surfaces dirt- and grease-free.



3M offers a complete line of slip-resistant products designed for the safety and comfort of people in the workplace.

3M™ Safety-Walk™ Traction Systems



How to reach us

For more information or to place an order, call your local 3M distributor. Or, for the name of the 3M distributor nearest you, call: **1-800-852-9722**

For custom sizes and shapes, call 3M Converter Markets at: **1-800-328-1681**

To get technical data, application guidelines, maintenance, service life and warranty information about 3M traction products faxed directly to you, call Fax-On-Demand (3M™ Safety-Walk™ Slip-Resistant Tapes and Treads is document #8001; Custom Pressure-Sensitive Adhesives PC-1 and PC-2 for powder coatings is document #8002): **1-800-978-9654**

To speak to a technical support person, call: **1-800-626-8578**

For general assistance, call: **1-800-3M-HELPS**

Limited Warranty: Except where prohibited by law, the following is made in lieu of all express or implied rights, warranties and conditions, statutory or otherwise. 3M warrants that its 3M™ Safety-Walk™ Slip-Resistant Tapes and Treads will be free from defects in material and manufacture at time of purchase. There are many factors that can affect the performance and useful life of this product; i.e., the type and preparation of the surface, the conditions of use or exposure, etc. Due to the variety of factors that can affect the use and performance of this product, most of which are uniquely within user's knowledge and control, it is essential that user (a) determines whether or not this product is fit for the desired purpose, (b) suitable for user's method of application, (c) adequately maintained and (d) is replaced at end of useful life.

Limitation of Remedies and Liability: 3M's only obligation shall be to repair or replace, at 3M's option, such quantity of the material proved to be defective. 3M shall not be liable for any injury, loss or damage, direct, indirect, incidental, special or consequential arising out of the use of this product.



Commercial Care Division

3M Center
St. Paul, MN 55144-1000
www.3M.com/commcare



Minimum 10% Post-Consumer Fiber

Printed in U.S.A.

© 3M 2005

70-0710-3656-3 Rev. B